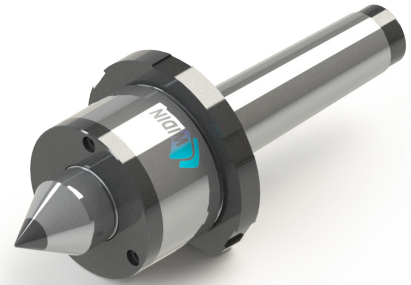
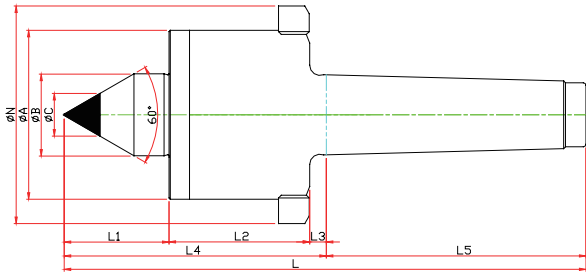


SMCN-TYPE

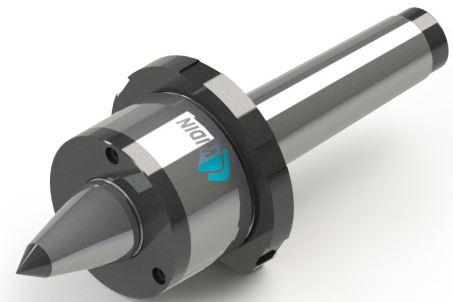
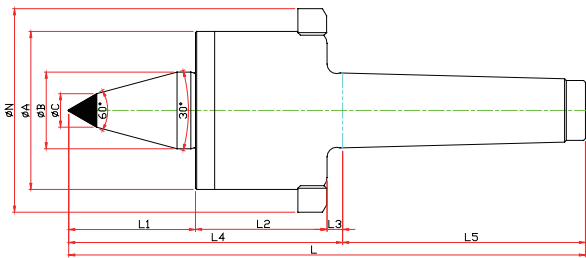
※ 너트, 초경타입 Carbide, Nut Type



Model	Order Number	Morse Taper	Dimension											Weight MAX.	R.P.M MAX.	Run Out
			GL	A	B	C	D	E	F	G	N	T	L			
LC-3SMCN	040113	NO.3	23,825	52	22	30	51	5	86	81	70	10	167	300	12000	0,003
LC-4SMCN	040114	NO.4	31,267	66	32	41	55	6.5	102.5	101.5	85	14	204	1100	10000	0,003
LC-5SMCN	040115	NO.5	44,399	82	40	51	75	6.5	132.5	129.5	105	16	262	2200	8000	0,005

SMBCN-TYPE

※ SHAFT 확장(바이트 간섭 최소화) SHAFT EXTENSION(Minimize the bite-interference)
 ※ 너트, 초경타입 Carbide, Nut Type



Model	Order Number	Morse Taper	Dimension											Weight MAX.	R.P.M MAX.	Run Out	
			GL	A	B	b	L1	L2	L3	L4	L5	C	N				L
LC-3SMBCN	041113	NO.3	23,825	52	22	10	40	51	5	96	81	10	70	177	160	12000	0,003
LC-4SMBCN	041114	NO.4	31,267	66	32	14	50	55	6.5	111.5	101.5	14	85	213	520	10000	0,003
LC-5SMBCN	041115	NO.5	44,399	82	40	16	65	75	6.5	146.5	129.5	16	105	276	940	8000	0,005

NC-TYPE
 NCP-TYPE
 NK-NKD TYPE
 GR-SM TYPE
 SMP-TYPE
 D50 TYPE
 HD-TYPE
 PT-TYPE
 LM CENTER
 LM-H CENTER